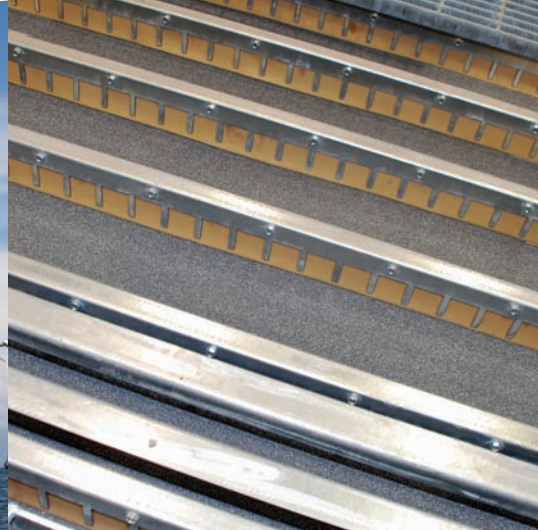




AIRBLAST

Market Leading Grit Blasting and Coating Facilities





State-of-the-art automation for maximum throughput and cost savings.

More efficient than you could imagine

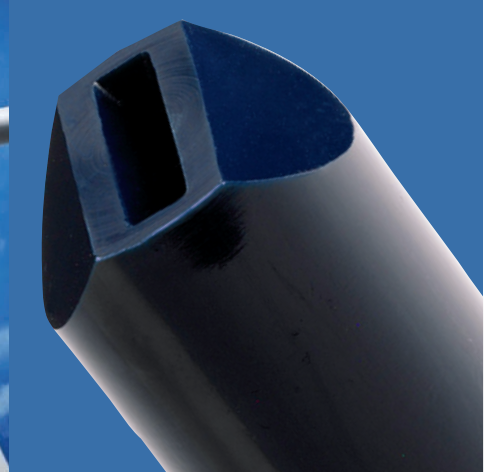
Airblast is in a unique position to meet the demands of the wind turbine tower manufacturing industry. Our insight into the challenges faced when preparing and applying coatings to turbine towers has resulted in our recent award of two major contracts to design, manufacture and install spray booths and blast rooms for this market.

Airblast has provided facilities for Skykon and is presently building the UK's largest capacity on-shore tower manufacturing site's Blast Rooms and Spray Booths. We estimate that our unique approach to this stage in a towers manufacture as much as halves current process times.

Our unique approach is based on not just the latest technologies, but the very best use of those technologies in:-

- Blast Rooms & Media Recovery Systems- Tried and tested throughout the world, our rooms utilize the Airflex media recovery system which offers many advantages over other systems, principally high recovery efficiency, low energy consumption and virtually silent running.
- Blastman Automated Robot Blasting – Much more efficient than manual or wheel blasting, Blastman robots combine large nozzles with high air pressures and state-of-the-art automation for maximum throughput and cost savings.
- Spray booths – Our unique air control system ensures excellent airflows around the exterior and interior of the tower, and the elevated temperature control offered by our advanced air jet system results in dramatically reduced processing times.

This unique combination of technologies means that with Airblast, energy consumption is vastly reduced, and throughput up to double that of competitive equipment is possible.



By deploying our full recovery floor system, manual abrasive clean up time is eliminated.

The most productive blast room

Full recovery floor

By deploying our full recovery floor system, manual abrasive clean up time is eliminated. The constant recirculation of abrasive also allows our media classification equipment the time to ensure that abrasive is returned to the blast machine in as new condition. This greatly benefits consistency of blast profile over the work piece, reducing secondary blasting to areas that on inspection are found to be outside specification.

Ventilation

Airblast ventilate all their facilities at a rate of 50ft per minute, horizontal airflow. This combined with attention to detail on replacement air and exhaust air details ensures

that almost all dust generated by the process is suspended in the air stream and eliminated prior to media being processed through the abrasive classifier.

Robot blasting options

Airblast Work closely with Blastman robotis Ltd who have specialised in automated robotic blasting for nearly three decades, continuously meeting new customer requirements, now doing the same for wind turbines. Our robots B7 and B12 are specifically designed for the internal and external cleaning of tower sections, and our wide range of machines gives the same high quality finish to all turbine parts.

Our customers testify that robotic air-blasting is the most cost-effective way to clean large work

pieces, many times more efficient than manual or wheel blasting. BLASTMAN robots utilise bigger nozzles and higher air pressure, with state-of-the-art automation, creating a tireless worker that can guarantee the highest levels of production through-put and significant savings. All this together with unbeatable consistency of surface quality at the desired profile and the huge bonus of health and safety for the operators.

Flat blasting nozzles

The development of blast nozzles with a "flat venturi design" can as much as double the speed of the blasting process, or alternatively whilst maintaining the process half the air requirement and energy consumption.



A unique spraybooth solutions

Excelent air flow provide superior performance

Insight into the challenges faced when applying coatings to a wind turbine tower led to the development a unique air control system that ensures excellent airflows both around the exterior of the tower and up the interior.

Speed through nozzled air control

Combining elevated temperature control with an advanced air jet system enables Airblast spraybooths to dramatically reduce processing times, meaning work throughput capacity is as much as double that of conventional spraybooths.

Designed versatility

Every Airblast spraybooth installation is designed to meet the specific needs of each individual application, and are suitable for both manual and/or robotic paint application.

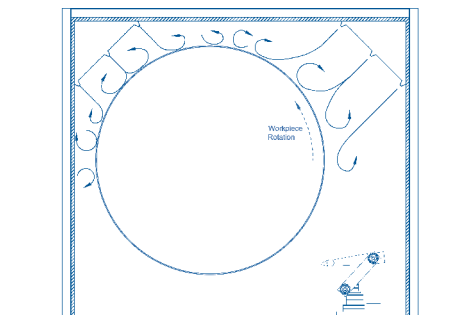
Patented features of Wiwa insures high reliability and durability

Airblast incorporate the WIWA FlexiMix II and DuoMix plural component systems when both coating and laminating in the Wind Energy Industry. The unique patented features of WIWA pumps insures high reliability and durability maintaining the highest productivity and consistency.

Reduced air consumption

Airblast spraybooths showcase the very latest in spraybooth technology, reducing the energy consumed during a spraying process by up to 75% compared to many conventional systems.

Airblast Airjet System



Contact us

For further information on how our products and services could benefit your company, please contact us by any of the means opposite.

Airblast Ltd
King Street Industrial Est
Langtoft, Peterborough
Cams, PE6 9NF

Tel 01778 560650
Fax 01778 560724
sales@airblast.co.uk
www.airblast.co.uk

Airblast-AFC
250 Airport Parkway
Oroville,
CA 95965

Tel: 800.331.7744
sales@airblast-afc.com
www.airblast-afc.com